

## Vimentin

**Catalog Number:** 26054

**Gene Symbol:** Vimentin

**Description:** Anti-Vimentin Mouse Monoclonal Antibody

**Background:** Vimentin is an intermediate filament protein found in various non-epithelial cells, especially in mesenchymal cells. It is often used as a marker of mesenchymally-derived cells or cells undergoing an epithelial-to-mesenchymal transition (EMT) during both normal development and metastatic progression.

**Immunogen:** A synthetic peptide from the internal region of human vimentin protein.

**Tested applications:** ELISA, WB, IHC, IP

**Recommended dilutions:**

ELISA: 1:1000-1:5000

WB: 1:100-1:1000

IHC: 1:50-1:100

**Concentration:** 1mg/ml

**Host:** Mouse

**Clonality:** Monoclonal

**Purity:** Purified from ascites

**Format:** Liquid

**Storage buffer:**

Preservative: no

Constituents: PBS (without  $Mg^{2+}$  and  $Ca^{2+}$ ), pH 7.4, 150 mM NaCl, 50% glycerol

**Species Reactivity:** Anti-vimentin antibody recognizes vimentin of vertebrates.

**Storage Conditions:** Store at  $-20^{\circ}C$ . Avoid freeze / thaw cycles

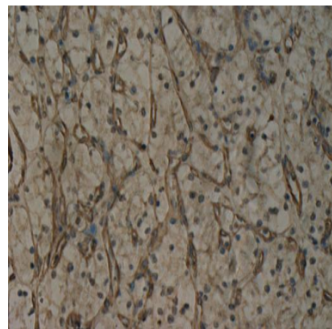
### Western blot:



WB:Anti-Vimentin

Western blot analysis of recombinant vimentin protein. Purified His-tagged vimentin protein (Cat.#10190) was blotted with anti-vimentin monoclonal antibody (Cat.# 26054).

### Immunohistochemistry:



Immunohistochemical analysis of paraffin-embedded human renal cancer tissue with anti-vimentin monoclonal antibody (Cat. #26054). Tissue samples were fixed with formaldehyde and blocked with 1% serum for 15 min at  $37^{\circ}C$ . Antigen retrieval was by heat mediation in citrate buffer (pH6). Samples were then incubated with primary antibody (1:100 dilution) overnight at  $4^{\circ}C$ . A HRP-conjugated Goat anti-mouse IgG (1:50 dilution) was used as secondary antibody